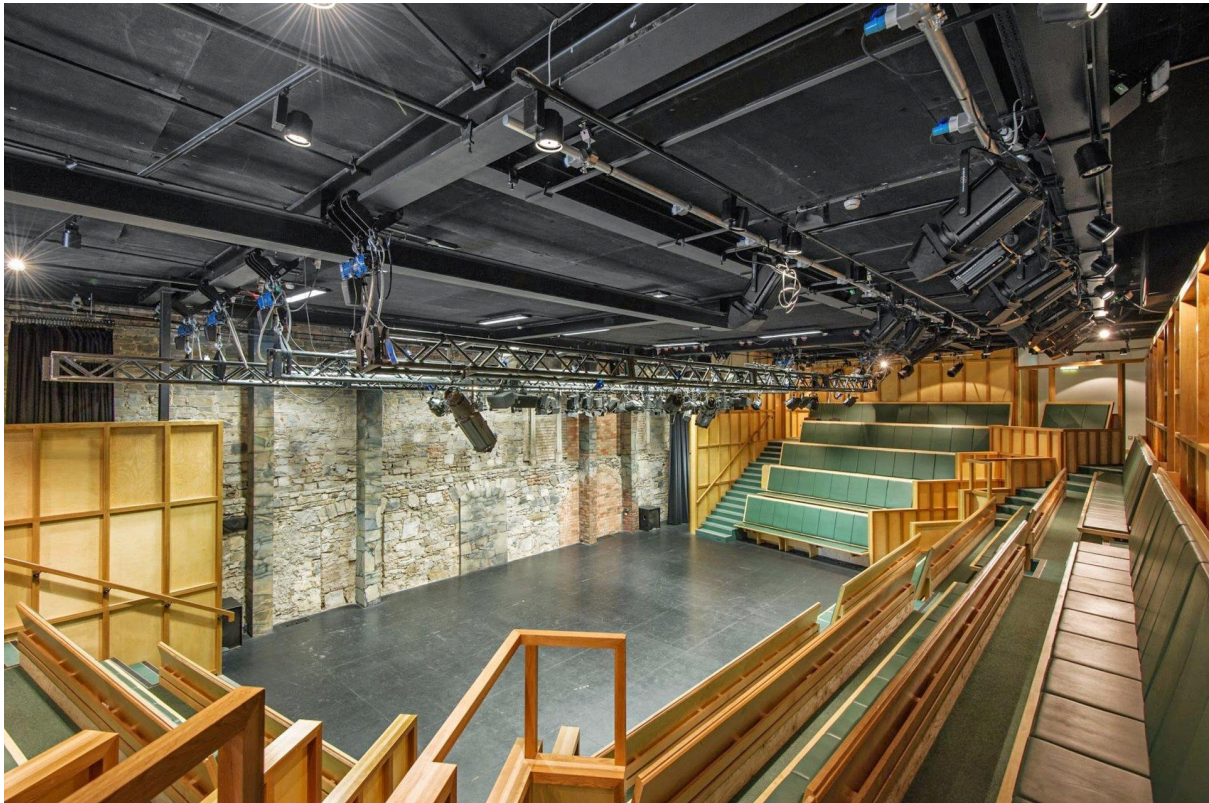




SMOCK ALLEY THEATRE

1662

Main Space Technical Specifications January 2025



For further information on any of the details listed below, please contact:

Jessie Doyle (Technical Manager) - (01) 677 0014

Email: jessie@smockalley.com

Address: 6-7 Exchange St Lower, Temple Bar, Dublin 8
D08EH67

General:

Standard get in, tech, preview and opening nights, visiting Company will have access to the space from 10am to 10pm. Any other arrangements must be made with the Artistic Director and the Technical Manager.

On show days access to the theatre space and backstage areas is available to the visiting Company from two hours before showtime.

A risk assessment must be furnished to the Technical Manager ahead of the get in.

Failure to notify any risk associated with the production will result in a possible refusal of that item or action as a part of the show.

Please note that the Tech Spec is subject to change so contact the Technical Manager for any specific questions.

Parking:

Please be advised that we do not have any on site parking facilities.

The nearest paid car park is [Q-park Christchurch](#), or [APCOA Jervis](#).

Get in/out access:

Exchange Street Lower at the front of the building

Glass doors Kaplans lane 2300mm x 1350

Delivery door backstage Main Space 2260mm x 1240mm

Auditorium door DSL 2000mm x 1000mm

Alternative access:

Cows Lane Load-in doors: 2600mm high x 2.200mm wide

The Cows Lane door access involves a set of stairs down to the stage area, so is more suited to loading in of sound/LX desks to ops position on the same level as the doors.

Internet:

Internet and WiFi connections are available backstage and on stage please ask a member of the Tech Dept for access.

Staffing:

A member of Smock Alley Theatre's technical staff is always on site but does not form part of the visiting company's crew.

We do not provide sound engineers, lighting technicians or stage management for the running of shows or rehearsals.

Stage:

The Stage is flat (no rake) and has a matte black ply surface.
Visiting Companies are not to fix directly into the floor.

Stage dimensions:

Stage Depth: 7500mm from back wall to front row seating
Stage Width: 12000mm at the widest point upstage and 9950mm at the seating downstage.
Ceiling height: 5485mm
Grid trim height: 4250mm

Rigging:

Grid 4 motorised trusses (LX)
Fixed position bars Front of House, Front of House Advance Bar, Over audience SR and SL, and over the Vom doors.

96 x 3kw channels in total
All circuits are 16amp
48 over the stage
6 channels on the floor upstage right
6 channels on the floor upstage left
12 channels FOH Bar
12 channels FOH Advance Bar
6 channels over the audience stage right.
6 channels over the audience stage left.

Drapes:

1 Split curtain on track (back wall)

Access Equipment:

1 Zarge
1 small Zarge
1 10ft wooden A frame

Seating:

There are 177 seats in the Main Space.
Any seat kills must be discussed and arranged with the Technical Manager and Box Office
There are five 2-seat sections that can be removed in the front row to accommodate wheelchair users.

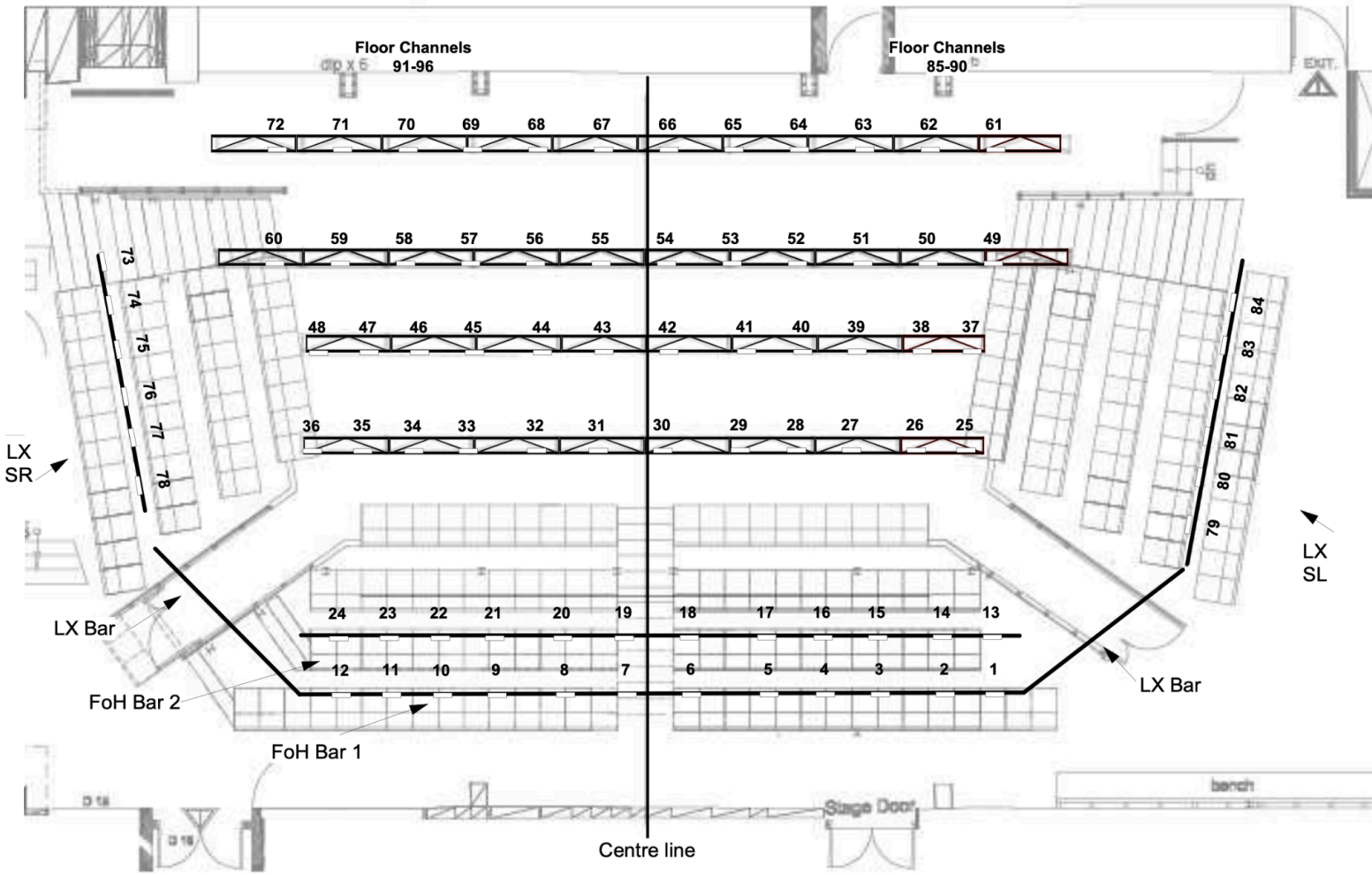
Lighting Control:

ETC ION console with Universal Fader Wing (20 faders)
ETC Sensor rack, housing 2 x 48x CEM+ Dimmer Modules

This console is networked and can facilitate the use of riggers remote if the visiting company has the app. Please ask Tech dept for access to that network.

Circuit distribution plan:

Main Space Circuit Plan



Smock Alley Theatre
Not to scale

Lighting Continued:

Please note that 16amp circuits over head and in the floor dips are all dimmers and not Hot Power.

House Lights are hard patched to channels 400 thru 411 on a separate dimmer.

These lights are not to be used as their separate channels, nor can they be involved in any effects.

They are for the safety of audience movement during preshow, interval and post show. If your actors are travelling up or down the stairs as part of the action of the show we may ask you to include some house light for safety.

Temporary Power:

Stage floor 4x 13amp domestic sockets

Stage right - 2x 16amp ceesockets

Grid - 4x 16amp ceesockets

All hot power in the room is turned off each evening. Anything plugged into the floor dips must be unplugged at night, and should be disclosed to the technical department so it forms part of the nightly shutdown.

Lighting Equipment:

The following lamps are available for use by visiting companies in the Main Space:

20	RJ Fresnel
4	RJ PC
4	Strand Preludes
10	Selecon Aurora 1k Floods
15	S4 Pars
12	S4 Profile 15/30
6	S4 Profile 25/50
30	Quartet F (Black)

16 amp TRS of various lengths, including splitters
Gel frames for lamps
Cutting board for gels
Please note we do not have a gel stock in-house

Talkback:

Canford Tecpro Master Station MS721 with 6 wired belt packs and headsets.
Please let the tech department know where you would like these comm packs set up - there is a port at each entrance/exit at stage level (4 stage level total) and a port at the ops position.

Sound Equipment:

Allen & Heath iLive R72 desk
iDR-16/8 stage box patched to a Van Damme 16/8 stage box up stage right.
Allen & Heath iDR-out Audio Output Expander
Martin Audio AQX system controller (crossover)

Amps:

2 x Yamaha p3500 (FOH & Subs)
1 x t-amp D4- 500 (DD6s overhead)

Speakers:

2 Martin x AQ12's (FOH)
4 x Martin DD6's (overhead)

2 x Martin Audio Blackline S18 Bass Bins (Subs)

2 Martin LE 1200 Series (Monitors)

Show relay (audio only) to backstage areas Main Space

Show relay (video only) available for use for audio described performances accessed from the control room. Please get in touch with the Technical Manager to arrange.

Induction Loop hearing aid

Backstage Facilities:

4 dressing rooms.

2 showers backstage

2 unisex bathrooms backstage

1 accessible bathroom backstage

There is no designated visiting company office.

Shared Green Room facilities (shared with Boys School and Smock Alley staff)

Fridge, microwave, sink, and kettle in Green Room.

As this is a shared space we ask that you clean as you go.

Wheelchair access for patrons is via the front of the building, through Kaplans Lane glass doors.

Wardrobe:

There is a washing machine and dryer backstage. These are also shared with Boys School, so we may need to put you in touch with another visiting company's Stage Manager or Costume Dept to work out a schedule that works for all.

Please note that dryers and dry buddies, hair curlers etc cannot be left on overnight. If left on they will be switched off on building lockdown.